

ESCRI-SA Data Portal

ESCRI Knowledge Sharing Reference Group

In partnership with:



ARENA
Australian Government
Australian Renewable
Energy Agency



Advisian
WorleyParsons Group

This activity received funding from ARENA as part of ARENA's Advancing Renewables Programme

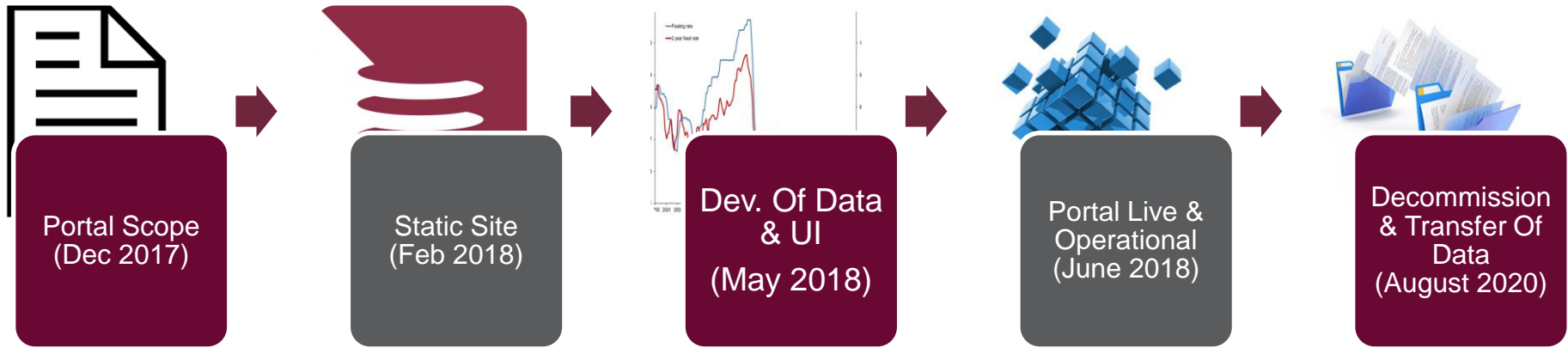
Background To Web Portal

- > Knowledge sharing is considered an integral element of the project
- > Portal built to share knowledge/data with stakeholders
- > URL: www.escri-sa.com.au
- > Operational for the first 2 years after BESS commissioning
- > Plan for decommissioning

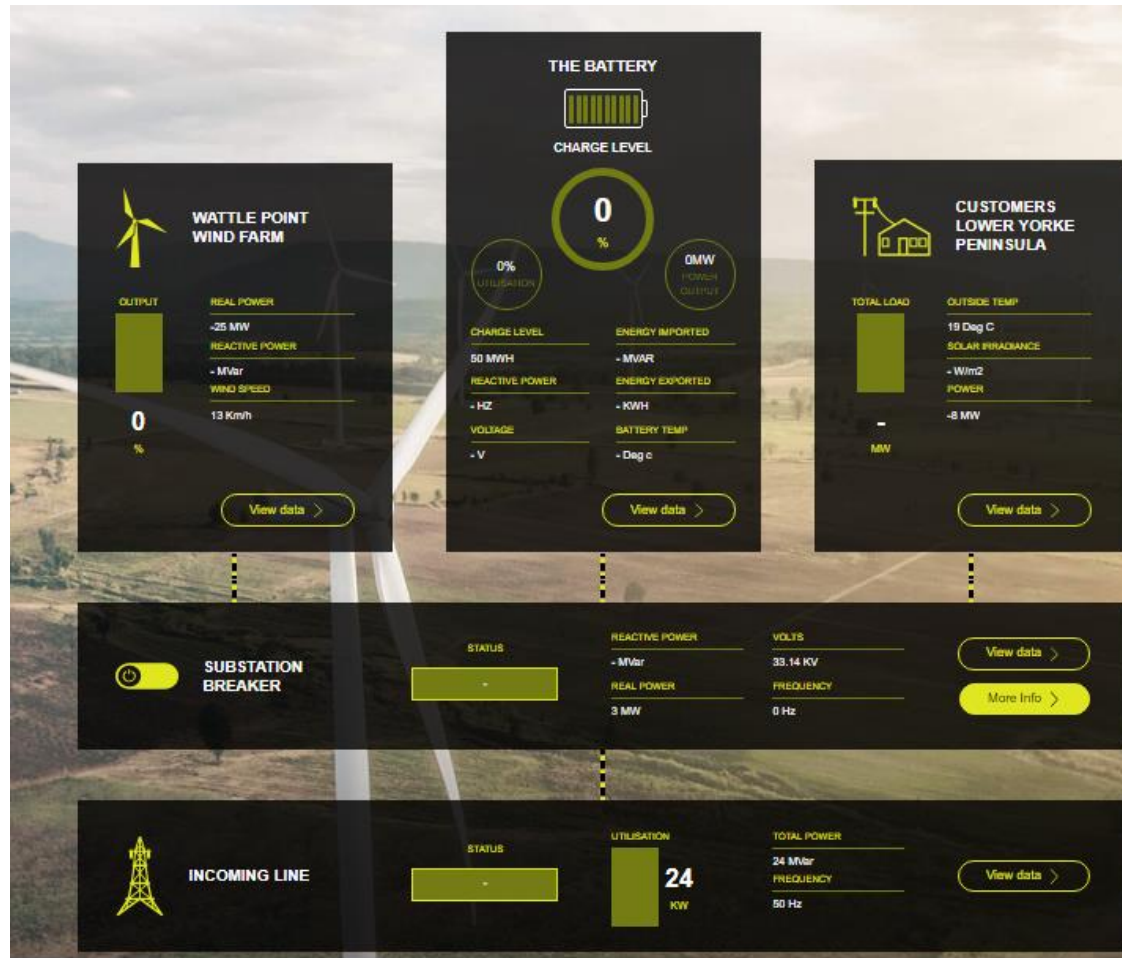
Portal Key Functionality & Data

1. Project status and background to ESCRI project
2. Real-time state of battery and surrounding assets (Updated every 4 secs)
3. Data archive: 4-second data (rolling 31 days) and 5-minute averaged data
4. Online data charting tool
5. Ability to download data and reports
6. Contact page to allow for enquiries

Timeline For Development



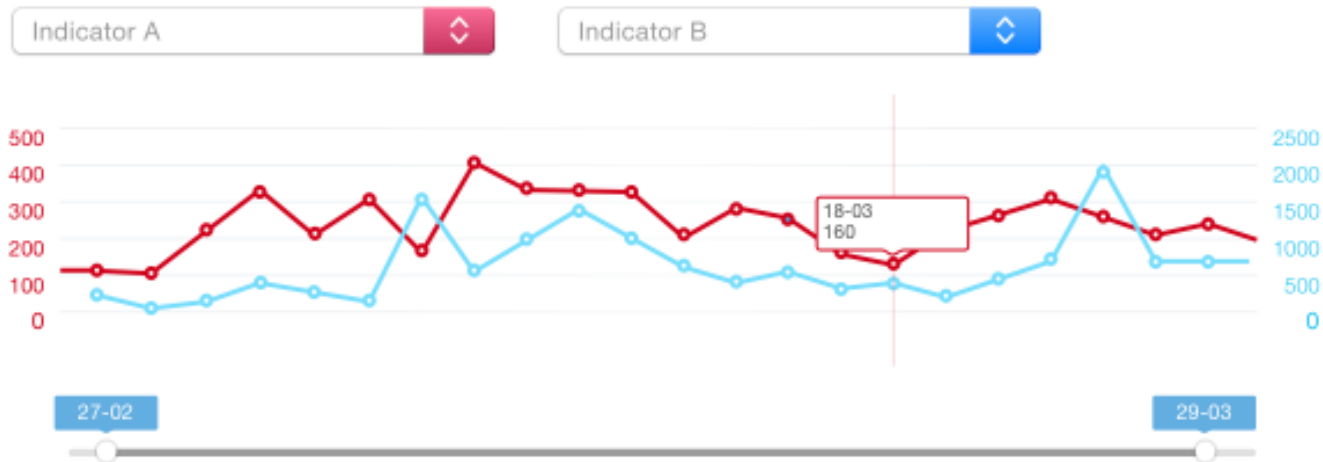
SCADA Feed



Charting Tool

Data visualisation

Aenean pharetra, lacus elementum vulputate porttitor, tellus tellus placerat urna, ac euismod risus dolor ac lacus. Ut pretium iaculis leo, id tempus dolor vestibulum quis. Etiam commodo ligula at metus rutrum, eget pulvinar justo interdum. Nunc maximus odio in felis porta posuere. Vivamus porta semper tortor sollicitudin viverra. Cras sodales auctor ex vitae viverra. Nunc dapibus sagittis lectus, ac commodo sem aliquet nec.



Download the 4-Second poll data files for your selected indicators by clicking the download button.

[Download](#)

Download Of Data

Wattle Point Windfarm Indicator Group

WF_ReactivePower_MVAR

WF_Real_Power_MW

WF_Output_%

Dalrymple Wind Speed



Step 2: Select Date Range

Choose a date range and click download. A zipped file containing the selected data will commence downloading.

Start Date

04/30/2018

End Date

05/01/2018

Download >



ElectraNet Pty Limited

PO Box 7096, Hutt Street Post Office
Adelaide, South Australia 5000

P+61 8 8404 7966 or 1800 243 853 (Toll Free)

F+61 8 8404 7956 **W** electranet.com.au

ABN41 094 482 416 **ACN**094 482 416

Thank you

Matthew Rowe

Advisian

Level 17

141 Walker St, North Sydney, NSW 2060

Ph. 0421 914 208

Email: matthew.rowe@advisian.com

In partnership with:



ARENA

Australian Government
Australian Renewable
Energy Agency



Advisian

WorleyParsons Group

This activity received funding from ARENA as part of ARENA's Advancing Renewables Programme

Key Learnings / Difficulties

1. Aggressive timeframe – using agile delivery method
2. Stakeholder management – getting data points from assets owned by other companies
3. Complexity of data acquisition and housing
4. Designing for public audience – balancing technical with accessibility

Questions