

# ESCRI-SA Web Portal

ESCRI Knowledge Sharing Reference Group

8 May 2018

In partnership with:



**ARENA**  
Australian Government  
Australian Renewable  
Energy Agency



**Advisian**  
WorleyParsons Group

This activity received funding from ARENA as part of ARENA's Advancing Renewables Programme

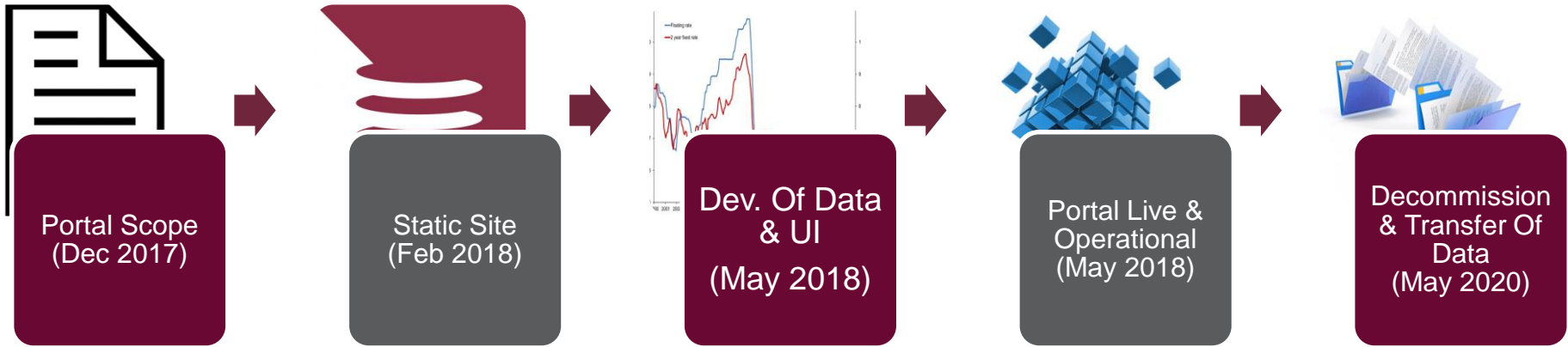
# Background To Web Portal

- > Knowledge sharing is considered an integral element of the project
- > Portal built to share knowledge / data with stakeholders
- > URL: [www.escr-sa.com.au](http://www.escr-sa.com.au)
- > Operational for the first 2 years after BESS commissioning
- > Plan for decommissioning

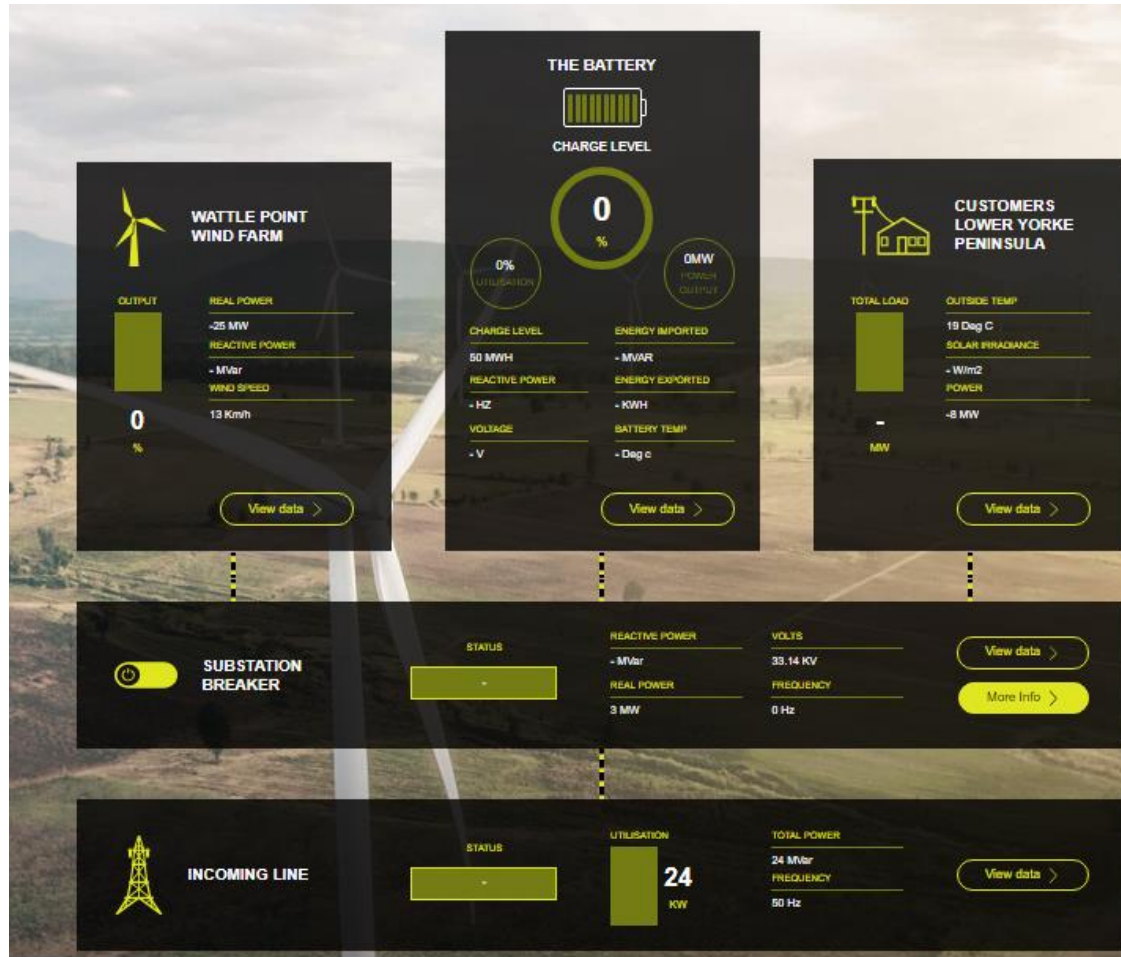
# Web Portal - Key Functionality & Data

1. Project status and background to ESCRI-SA project
2. Real-time state of battery and surrounding assets (Updated every 4 secs)
3. Data archive: 4-second data (rolling 31 days) and 5-minute averaged data
4. Online data charting tool
5. Ability to download data and reports
6. Contact page to allow for enquiries

# Timeline For Development



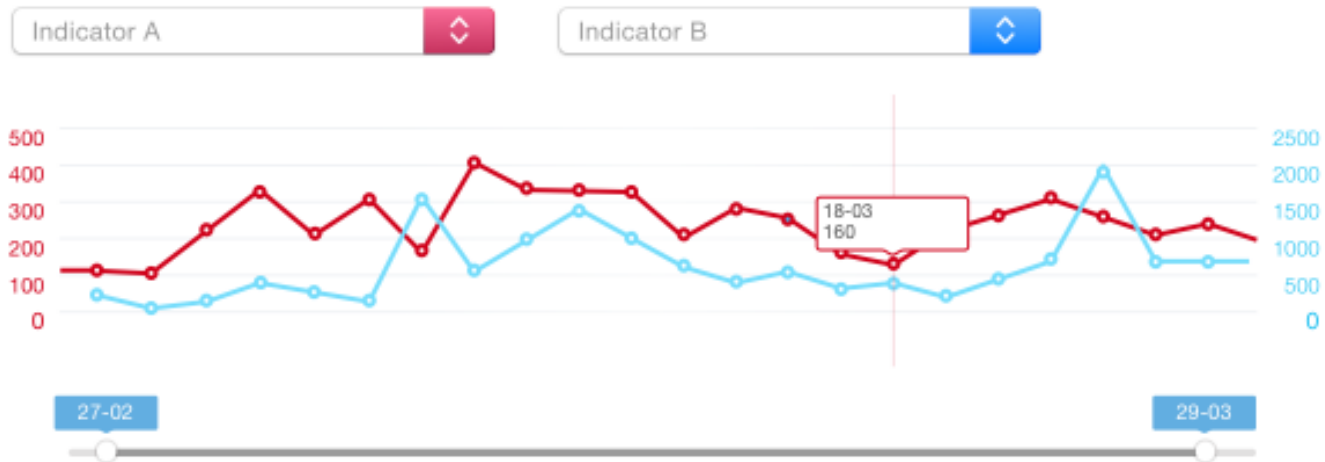
# SCADA Feed



# Charting Tool

## Data visualisation

Aenean pharetra, lacus elementum vulputate porttitor, tellus tellus placerat urna, ac euismod risus dolor ac lacus. Ut pretium iaculis leo, id tempus dolor vestibulum quis. Etiam commodo ligula at metus rutrum, eget pulvinar justo interdum. Nunc maximus odio in felis porta posuere. Vivamus porta semper tortor sollicitudin viverra. Cras sodales auctor ex vitae viverra. Nunc dapibus sagittis lectus, ac commodo sem aliquet nec.



Download the 4-Second poll data files for your selected indicators by clicking the download button.

[Download](#)

# Download Of Data

## Wattle Point Windfarm Indicator Group



WF\_ReactivePower\_MVAR



WF\_Real\_Power\_MW



WF\_Output\_%



Dalrymple Wind Speed



## Step 2: Select Date Range

Choose a date range and click download. A zipped file containing the selected data will commence downloading.

**Start Date**

04/30/2018

**End Date**

05/01/2018

Download >

# Questions





**ElectraNet Pty Limited**

PO Box 7096, Hutt Street Post Office  
Adelaide, South Australia 5000

**P**+61 8 8404 7966 or 1800 243 853 (Toll Free)

**F**+61 8 8404 7956 **W** [electranet.com.au](http://electranet.com.au)

**ABN**41 094 482 416 **ACN**094 482 416

# Thank you

## Matthew Rowe

Advisian

Level 17

141 Walker St, North Sydney, NSW 2060

Ph. 0421 914 208

Email: [matthew.rowe@advisian.com](mailto:matthew.rowe@advisian.com)

In partnership with:



**ARENA**

Australian Government  
Australian Renewable  
Energy Agency



**Advisian**

WorleyParsons Group

This activity received funding from ARENA as part of ARENA's Advancing Renewables Programme