



ElectraNet
electricity transmission



Transmission Lines and Vegetation Management

At ElectraNet, we are serious about the safety of South Australia's communities. We undertake periodic vegetation management works to ensure that mandatory minimum clearance between vegetation and powerlines is maintained.

Bushfires pose serious danger to people and property and also cause widespread power disruptions. ElectraNet takes precautions at all times through its vegetation management programs, especially in the lead up to bushfire danger season.

The State Government has established legislation which defines minimum clearances between transmission lines and vegetation, and defines the species of plants that can be planted and nurtured in the surrounding area. ElectraNet has a statutory responsibility to manage these vegetation clearances around its transmission lines.

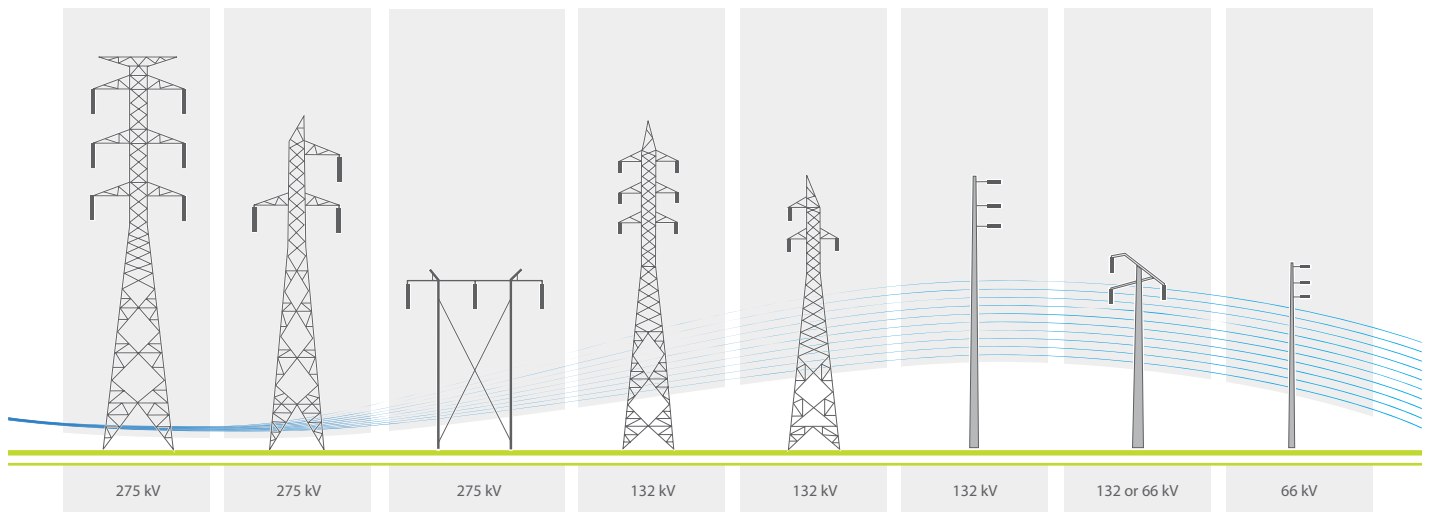
In consultation with the Country Fire Service (CFS), ElectraNet addresses risks associated with fire prevention and management.

If land is found to contain vegetation which breaches or is likely to breach the prescribed clearances around a transmission line, or is an unsuitable species, an ElectraNet representative will contact the property occupier to discuss available options, including trimming, cutting or removing vegetation.

If you are planting and nurturing new vegetation on your property near a transmission line, you will need to know the appropriate prescribed species, height restrictions and planting distance restrictions. Remember that restrictions vary for different line voltages, so please refer to the current Principles of Vegetation Clearance regulations under the Electricity Act 1996 or alternatively contact an ElectraNet representative to confirm the prescribed planting distance restrictions for your location.

For more information, please refer to the SA Country Fire Service website: www.cfs.org.au

Different types of powerline structures



Prescribed Planting Distance Restrictions

Voltage	Structure	Prescribed Planting Distance (m) from centreline	
		PD1	PD2
275kV	Tower	0 - 12.5	12.5 - 25
132kV	Tower	0 - 15	15 - 30
132kV	Stobie Pole	0 - 10	10 - 20
66kV	Stobie Pole	0 - 6.5	6.5 - 13
Maximum Height of Vegetation		3 metres	6 metres

